

MONTHLY MEMBERSHIP PROGRESS REPORT

LOCATION WASHINGTON

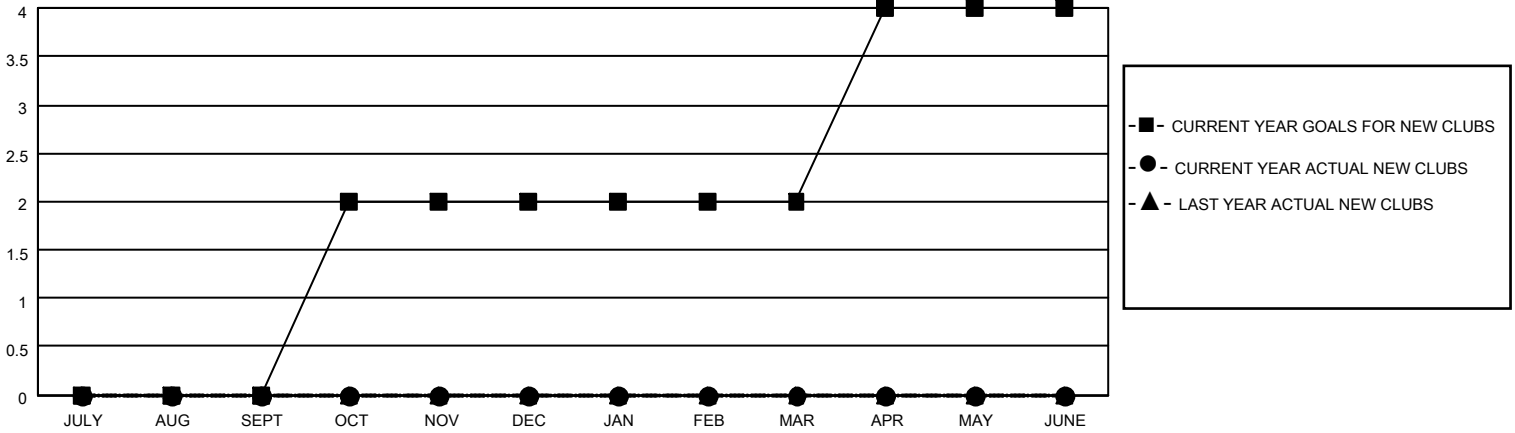
District 19 B

Results as of: 9/30/2022

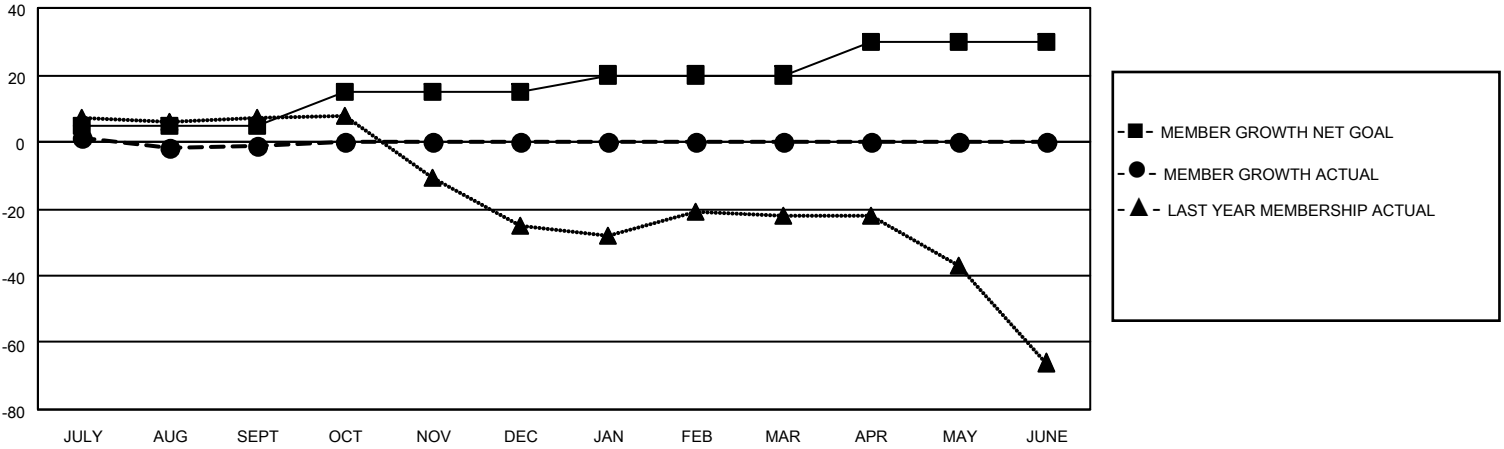
Clubs			
RESULTS FOR 2022-2023			
QUARTER	NEW CLUB GOAL	NEW CLUBS	DROPPED CLUBS
JULY/AUG/SEPT	0	0	0
OCT/NOV/DEC	2	0	0
JAN/FEB/MAR	0	0	0
APR/MAY/JUNE	2	0	0

Members			
RESULTS FOR 2022-2023			
QUARTER	MEMBER GROWTH NET GOAL	MEMBER GROWTH ACTUAL	DROPPED MEMBERS ACTUAL (including transfers)
JULY/AUG/SEPT	5	21	20
OCT/NOV/DEC	10	0	0
JAN/FEB/MAR	5	0	0
APR/MAY/JUNE	10	0	0

GOALS AND ACTUAL NEW CLUBS CUMULATIVE



GOALS AND ACTUAL MEMBERS CUMULATIVE



DROPPED CLUBS: 0

10 CLUBS OF 26 ADDED 1 OR MORE NEW MEMBERS

GENDER DISTRIBUTION

MALE	315 (56.05%)
FEMALE	247 (43.95%)
NON BINARY	0 (0.00%)
PREFER NOT TO ANSWER	0 (0.00%)

DROPPED MEMBERS

DECEASED	3
CLUB CANCELLED	0
OTHER	17
TOTAL	20

[CLICK HERE FOR CUMULATIVE MEMBERSHIP DATA](#)

TOTAL FAMILY UNIT MEMBERS	124
FAMILY MEMBERS PAYING HALF DUES	64